

## DCP 453 – Correction to Schedule 22, Example 7

### Legal Text

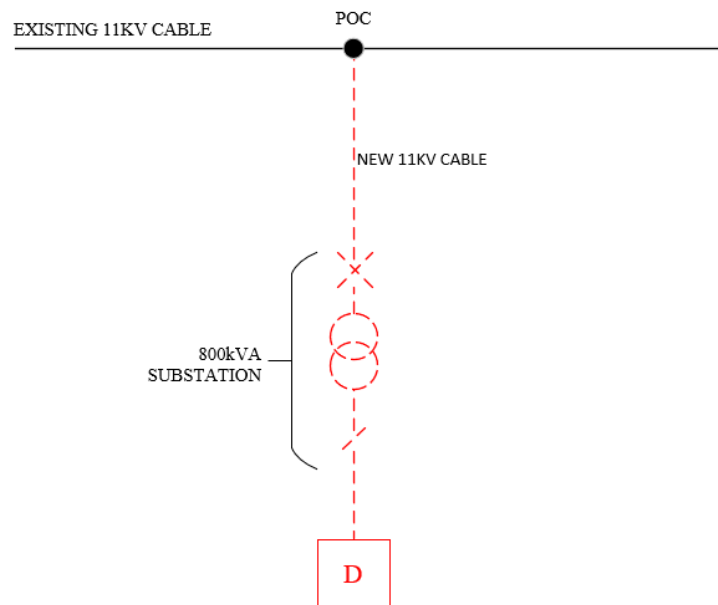
**Amend Schedule 22 (Common Connection Charging Methodology), Example 7 as follows<sup>1</sup>:**

**Example 5:** A new connection where the Minimum Scheme is a new substation teed onto the existing HV network.

**Purpose:** Simple example of a commercial connection, Extension Assets only, so charged in full to the Customer.

A Customer requests a new LV three phase 600kVA connection to commercial Premises. Four scenarios for connection are considered in Examples 5 to 8. The Minimum Scheme will be dependent on the specific circumstances as set out in paragraphs 1.1 to 1.7.

In this example the Minimum Scheme is a new 800kVA substation teed onto the existing 11kV network. The figure below shows the proposed network.



The Connection Charge for this Scheme is calculated as follows:

| Extension Assets:                                | Cost            | Apportionment | Customer Contribution |
|--|-----------------|---------------|-----------------------|
| Provision and installation of 150m of 11kV cable | £45,000         | n/a           | £45,000               |
| 800kVA substation                                | £85,000         | n/a           | £85,000               |
| Provision and installation LV cabling            | £6,000          | n/a           | £6,000                |
| LV Metering Panel                                | £4,000          | n/a           | £4,000                |
| 11kV joint to network                            | £3,000          | n/a           | £3,000                |
| <b>Total Extension Asset Cost</b>                | <b>£143,000</b> |               | <b>£143,000</b>       |

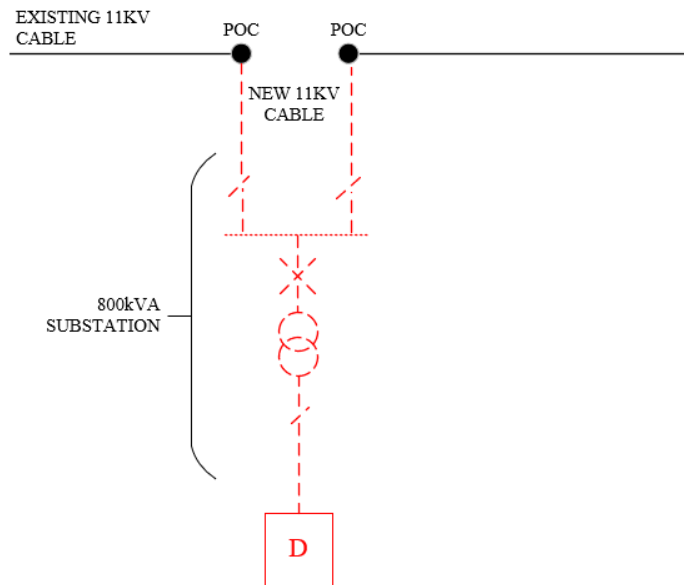
<sup>1</sup> Examples 5 and 6 are unchanged and included only for reference.

**Total cost of the work** = £143,000  
**Total Connection Charge to Customer** = £143,000

**Example 6:** A new connection where the Minimum Scheme is a new substation looped into existing HV network.

**Purpose:** Simple example of looped connection, Extension Assets only, so charged in full to the Customer.

In this variation to Example 5, the Customer is connected with a looped connection, as illustrated in the following diagram. The Minimum Scheme is a new 800kVA substation looped into existing 11kV network.



The Connection Charge for this Scheme is calculated as follows:

| Extension Assets:   | Cost            | Apportionment | Customer Contribution |
|---|-----------------|---------------|-----------------------|
| Provision and installation of 300m (2x150m) of 11kV cable looped into the network | £90,000         | n/a           | £90,000               |
| 800kVA transformer  | £75,000         | n/a           | £75,000               |
| Ring Main Unit  | £25,000         | n/a           | £25,000               |
| Provision and installation LV cabling   | £6,000          | n/a           | £6,000                |
| LV Metering Panel   | £4,000          | n/a           | £4,000                |
| 11kV joints to network  | £6,000          | n/a           | £6,000                |
| <b>Total Extension Asset Cost</b>   | <b>£206,000</b> |               | <b>£206,000</b>       |

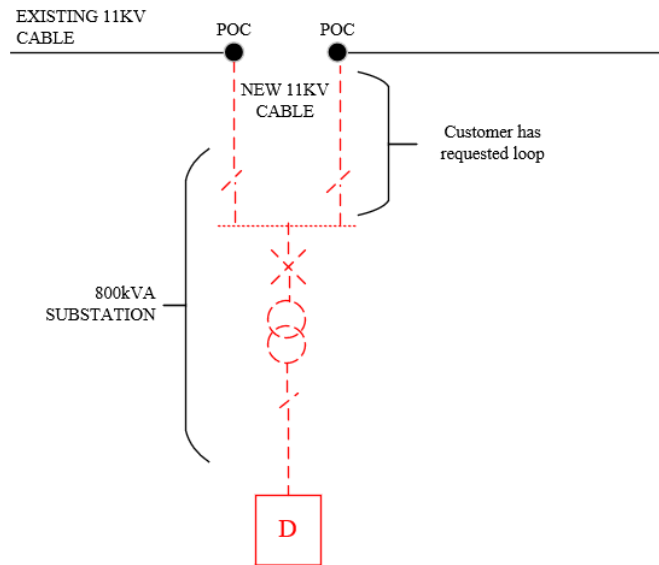
**Total cost of the work** = £206,000

**Total Connection Charge to Customer** = £206,000

**Example 7:** A new connection where the Minimum Scheme is as for Example 5 but the Customer requests an enhanced connection arrangement where the substation is looped into existing HV network.

**Purpose:** Shows that for a Customer requested Enhanced Scheme that the Customer pays costs above the Minimum Scheme plus O&M.

In this variation to Example 5, the Customer requests an enhanced connection arrangement where the substation is looped into existing 11kV network, as illustrated in the following diagram. The Minimum Scheme is as for Example 5.



The Connection Charge for this Scheme is calculated as follows:

| Extension Assets:   | Cost            | Apportionment    | Customer Contribution |
|---|-----------------|------------------|-----------------------|
| Provision and installation of 300m (2x150m) of 11kV cable looped into the network   | £90,000         | n/a              | £90,000               |
| 800kVA transformer  | £75,000         | n/a              | £75,000               |
| Ring Main Unit  | £25,000         | n/a              | £25,000               |
| Provision and installation LV cabling   | £6,000          | n/a              | £6,000                |
| LV Metering Panel   | £4,000          | n/a              | £4,000                |
| 11kV joints to network  | £6,000          | n/a              | £6,000                |
| <b>Total Extension Asset Cost</b>   | <b>£206,000</b> |                  | <b>£206,000</b>       |
| Difference between Minimum and the actual Scheme is £673,000 (£206,000-£1433,000). Operation & Maintenance @20%* of £673,000. |                 | 20%* of £673,000 | £124,600              |
| <b>Total Extension Asset Cost incl O&amp;M</b>  |                 |                  | <b>£21829,600</b>     |

\*Note, the 20% Operation and Maintenance percentage has been used for illustrative purposes only

**Total cost of the work = £206,000**

**Total Connection Charge to Customer = £206,000 + £124,600 = £21829,600**

GWLG – 28 April 2025

**Gowling WLG (UK) LLP**  
**28 April 2025**